



# GPS Tuner for MM6

Version 5, 2008

## Extended functions

---

## Overview

GPS Tuner is an off-road navigation application for Pocket PC devices. While most in-car or on-road navigation software gives you the ability of planning your trip based on a road network, **GPS Tuner gives you the ability to continue navigating where and when the roads end.**

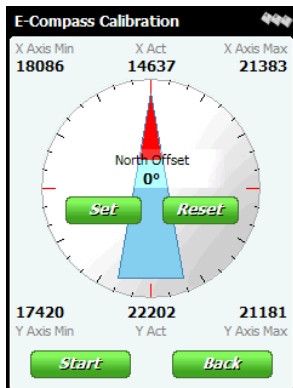
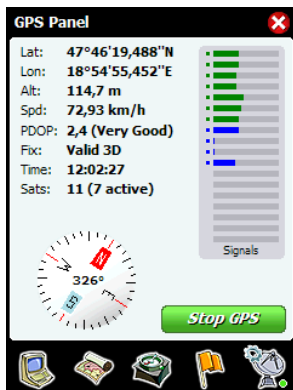
GPS Tuner is an excellent tool for hiking, geocaching, boating, flying, driving and many other sporting activities, where monitoring of duration, distance and speed can be important.

GPS Tuner can use the sensors (E-Compass, Thermometer, Barometer) and special keys of Magellan's MobileMapper 6 device.



### System Requirements:

- ▶ MobileMapper 6 device
- ▶ 20 MB free program memory
- ▶ SD Card for maps
- ▶ .NET Compact Framework 2.0



## E-Compass

GPS Tuner are able to use the built in E-Compass of MobileMapper 6 device. When your speed is below 5 km/h, GPS Tuner will use E-Compass heading information. You are able to enable or disable E-Compass using in Settings/Other Settings (2/3) screen.

Before using built in E-Compass you should calibrate it. Calibration process is quite easy. All you have to do is rotating the device slowly while the big arrow points to the same spot after you have pressed the 'Start' button. You are also able to define the true North direction (with North offset option) by pressing the 'Set' button.

### Calibration Steps:

- 1) Tap the compass on GPS Panel window to reach the E-Compass screen
- 2) Press 'Start' button
- 3) Rotate the device slowly while the big arrow points to the same spot

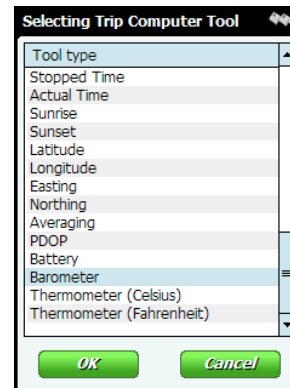
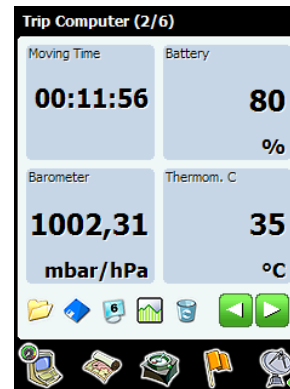
### North Offset:

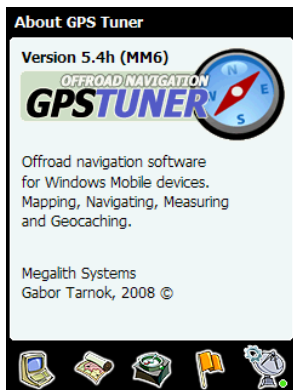
- 1) Before setting North Offset, please calibrate the E-Compass as above
- 2) Rotate the device while the big arrow points to North
- 3) Press 'Set' button
- 4) To reset the North Offset to zero, please press the 'Reset' button

## Barometer and Thermometer

You are able to use Barometer and Thermometer information as a Trip Computer or Compass Tool in GPS Tuner. Just tap one of the tool and select Barometer or Thermometer from the tool list.

## Using special keys of MobileMapper 6





## Technical Specification

<b>Minimal memory requirement</b>	15 MB free program memory
<b>Resolution</b>	QVGA (240 x 320) , VGA (480 x 640) and Square screen types are supported
<b>GPS Data format</b>	NMEA 0183 standard data sentences
<b>Map Grid</b>	24 Coordinate Format supported
<b>Track buffer</b>	15.000 points
<b>Custom waypoints</b>	5.000 points
<b>Routepoints</b>	5.000 points
<b>Area point buffer</b>	5.000 points
<b>Max. number of maps for auto select function</b>	2000 maps
<b>NMEA buffer (in each category)</b>	5 NMEA sentences
<b>Processing rate (in each category)</b>	5 NEMA sentences/sec
<b>Supported NMEA sentences</b>	GGA, GSA, GSV, RMC, VTG

# Software License Agreement for GPS Tuner

## DEFINITIONS

- a) ("Megalith") refers to Megalith Products.
- b) ("LICENSEE") refers to the entity acquiring this license.

## GRANT OF LICENSE and DISTRIBUTION.

The OBJECT may be installed on one PocketPC device per licensee.

## COPYRIGHT.

The SOFTWARE is owned by Megalith and is protected by Copyright laws and international treaty provisions.

## OTHER RESTRICTIONS.

You may not rent or lease the SOFTWARE but you may transfer the SOFTWARE and accompanying written materials on a permanent basis provided you retain no copies and the recipient agrees to the terms of the agreement. You may not reverse engineer, decompile or disassemble the SOFTWARE. If the SOFTWARE is an update, any transfer must include the update and all prior versions in your possession.

## PROPRIETARY RIGHTS.

All copyrights, patents, trade secrets, trademarks and other intellectual and proprietary rights in the SOFTWARE are and shall remain the valuable property of Megalith, or the Author of the SOFTWARE. You agree to take all necessary steps to ensure that the provisions of this agreement are not violated by you or by any person under your control or in your service.

## LIMITED WARRANTY.

Megalith warrants that the SOFTWARE will operate substantially in accordance with its accompanying documentation for a period of trial days. This warranty is void if failure of the SOFTWARE has resulted from accident, abuse or misapplication. YOU ARE THE ONLY BENEFICIARY OF THIS WARRANTY. YOU MAY NOT PASS THIS WARRANTY ON TO OTHERS. Although Megalith has tested the SOFTWARE on several software and hardware platforms, this SOFTWARE is licensed AS IS and you, the licensee, are assuming the entire risk as to its quality and performance.

NO LIABILITY FOR CONSEQUENTIAL DAMAGES. IN NO EVENT SHALL Megalith BE LIABLE FOR ANY DIRECT, INDIRECT, SPECIAL, INCIDENTAL OR CONSEQUENTIAL DAMAGES WHATSOEVER (INCLUDING WITHOUT LIMITATION, DAMAGES FOR BUSINESS INTERRUPTION, LOSS OF PROFITS OR DATA, OR OTHER PECUNIARY LOSS) ARISING OUT OF THE USE OF OR INABILITY TO USE THE SOFTWARE OR DOCUMENTATION EVEN IF Megalith HAS BEEN ADVISED OF THE POSSIBILITY OF SUCH DAMAGES. Megalith SHALL HAVE NO LIABILITY FOR ANY DATA READ, ACCESSED, STORED OR PROCESSED WITH THE SOFTWARE, INCLUDING THE COSTS OF RECOVERING SUCH DATA. IN NO CASE SHALL Megalith's LIABILITY EXCEED THE FEES PAID BY YOU FOR THE SOFTWARE. BECAUSE SOME STATES DO NOT ALLOW THE EXCLUSION OR LIMITATION OF LIABILITY FOR CONSEQUENTIAL OR INCIDENTAL DAMAGES, THE ABOVE LIMITATION OR EXCLUSION MAY NOT APPLY TO YOU.

## GENERAL

If any provision of this agreement is found to be invalid by any court of competent jurisdiction, the balance of this agreement shall remain in full force and effect.

GPS Tuner © 2008 - Megalith, Gabor Tarnok